



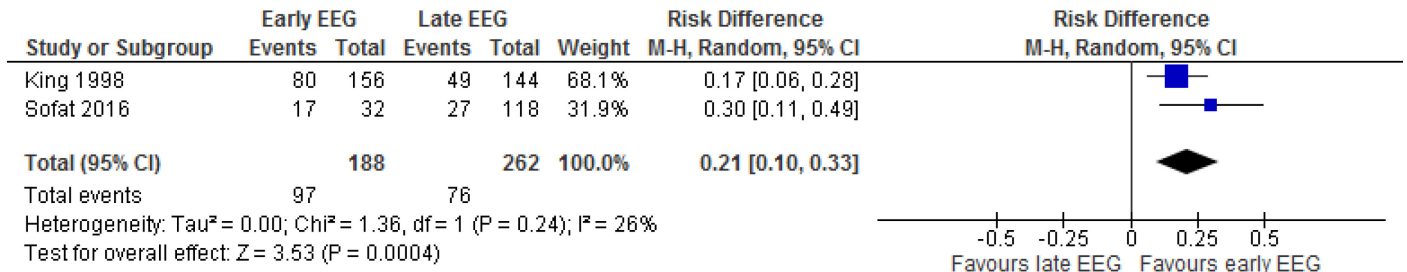
Bilaga 4 - Metaanalyser /Metaanalysis

Innehåll/content

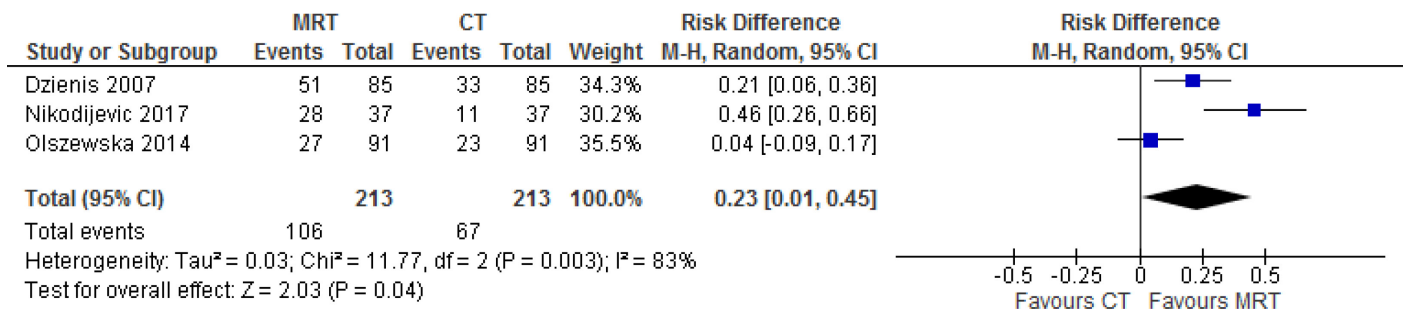
Diagnostik/Diagnostics	2
Läkemedel/Pharma	3
Kirurgi/Surgery.....	10
Annan behandling/Other treatment.....	13

Diagnostik /diagnostics

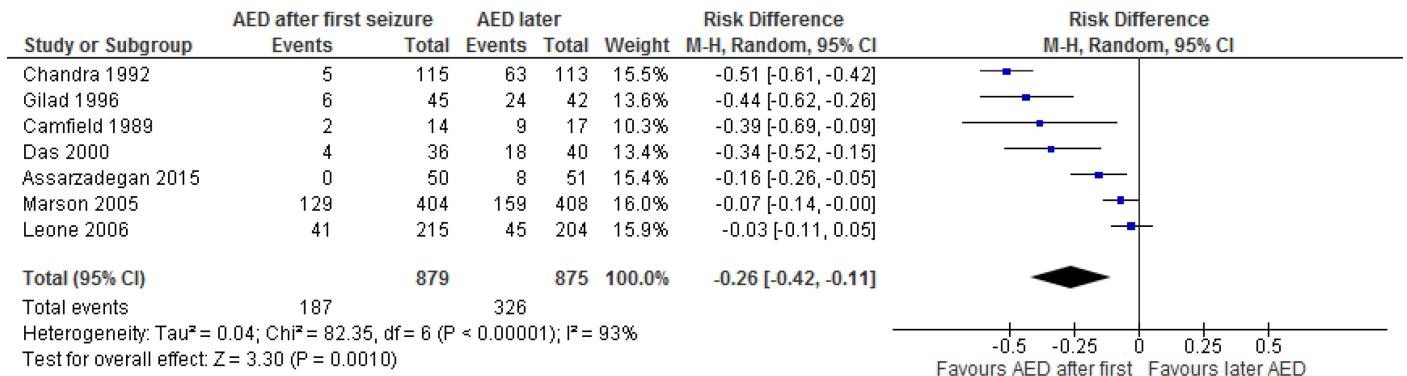
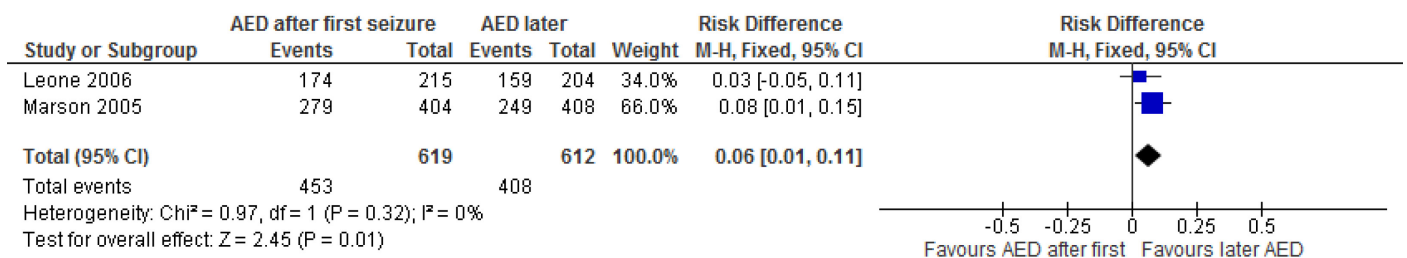
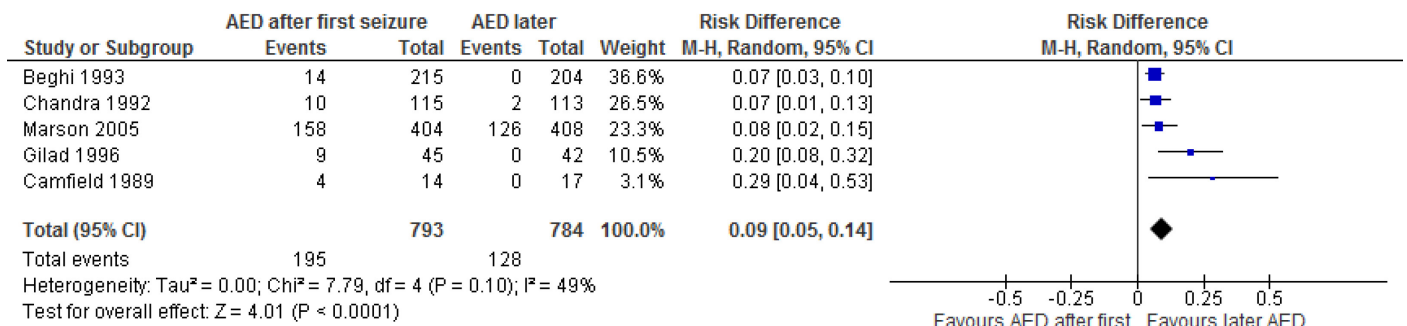
Figur 1.1 Early EEG (within 12 or 24 hours after seizure onset) compared to late EEG (more than 12 or 24 hours after seizure onset), observed epileptiform abnormalities

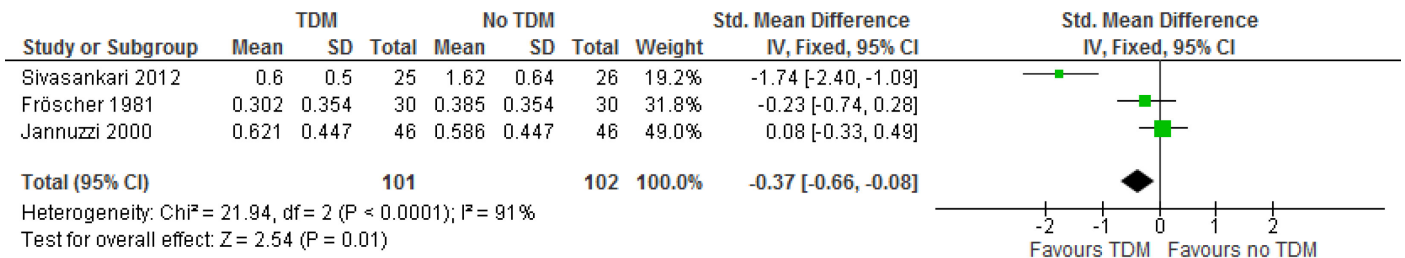


Figur 1.2 MR compared to CT, abnormal findings

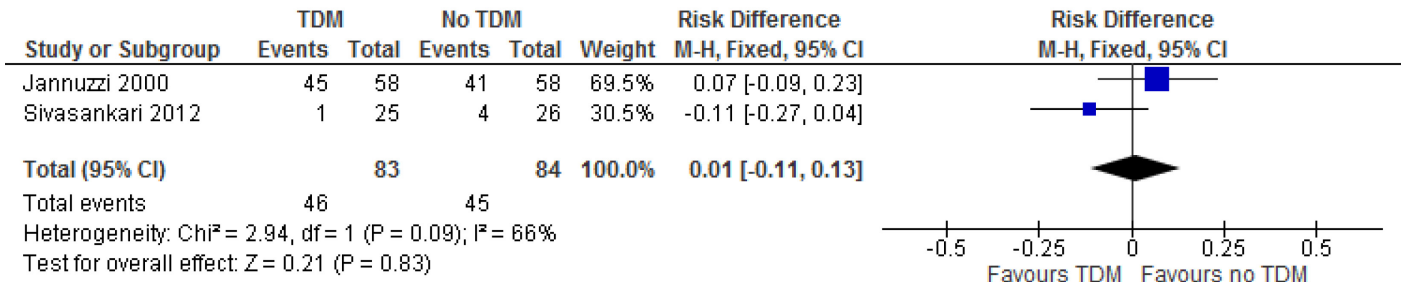


Läkemedel /Drugs

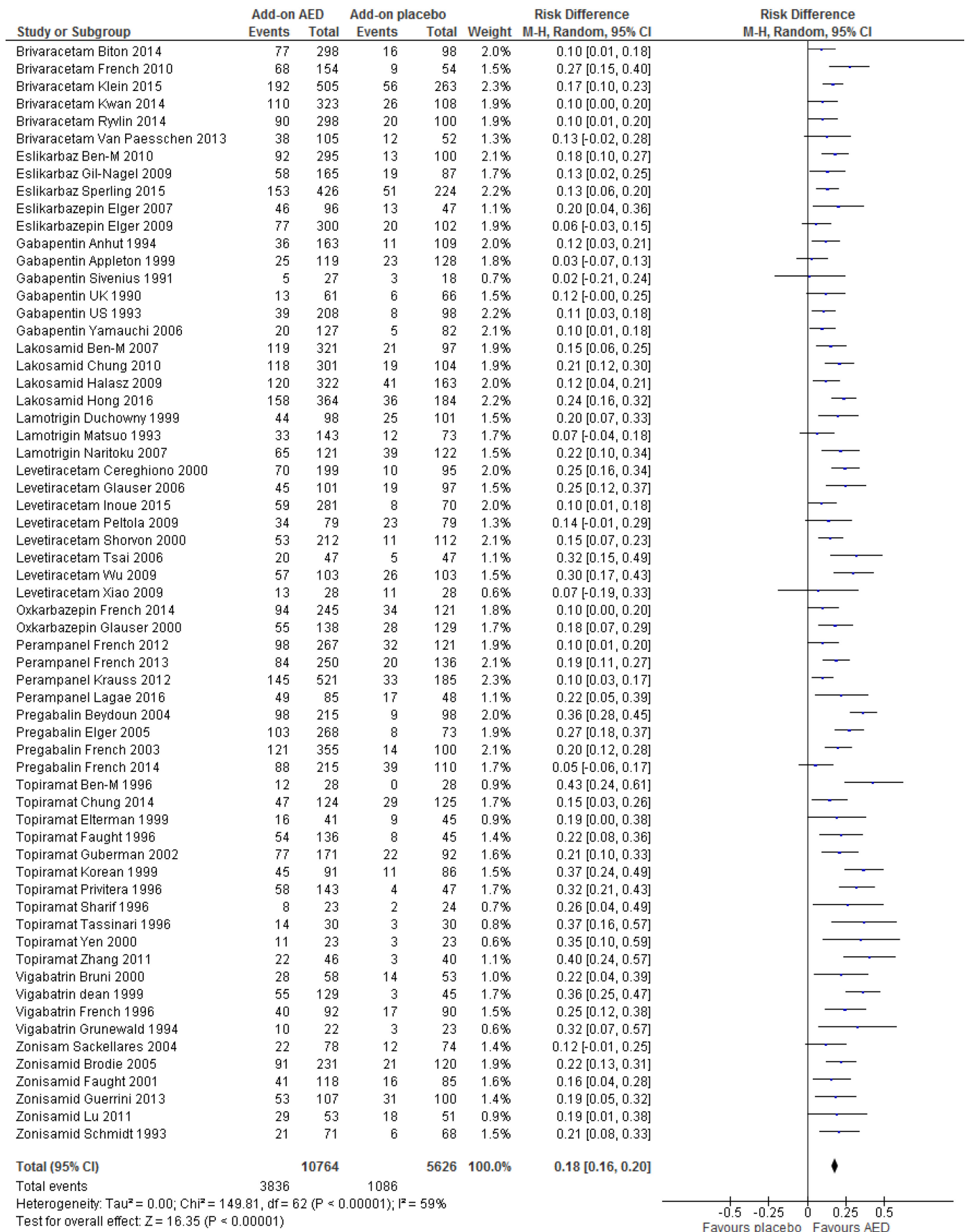
Figur 2.1 AED administered after first seizure compared to later administration of AED, recurrence of seizure at 6-24 months**Figur 2.2** AED administered after first seizure compared to later administration of AED, 2-year remission**Figur 2.3** AED administered after first seizure compared to later administration of AED, adverse events**Figur 2.4** AED with TDM compared to AED without TDM, reduction in seizure frequency



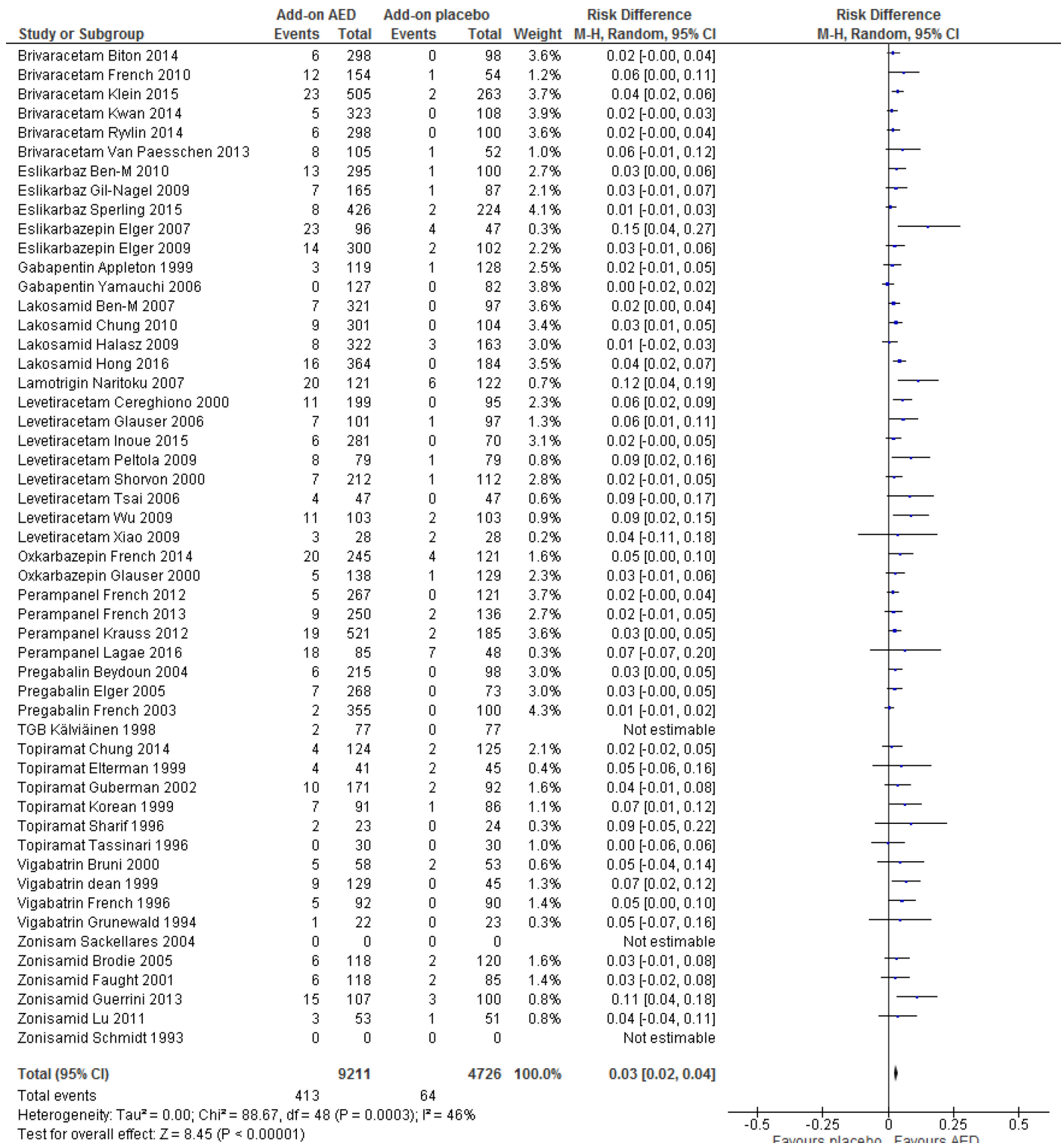
Figur 2.5 AED with TDM compared to AED without TDM, mild adverse events



Figur 2.6 Add-on AED compared to add-on placebo for persons with focal epilepsy, $\geq 50\%$ seizure reduction



Figur 2.7 Add-on AED compared to add-on placebo for persons with focal epilepsy, seizure freedom



Figur 2.8 Add-on AED compared to add-on placebo, discontinuation due to adverse events

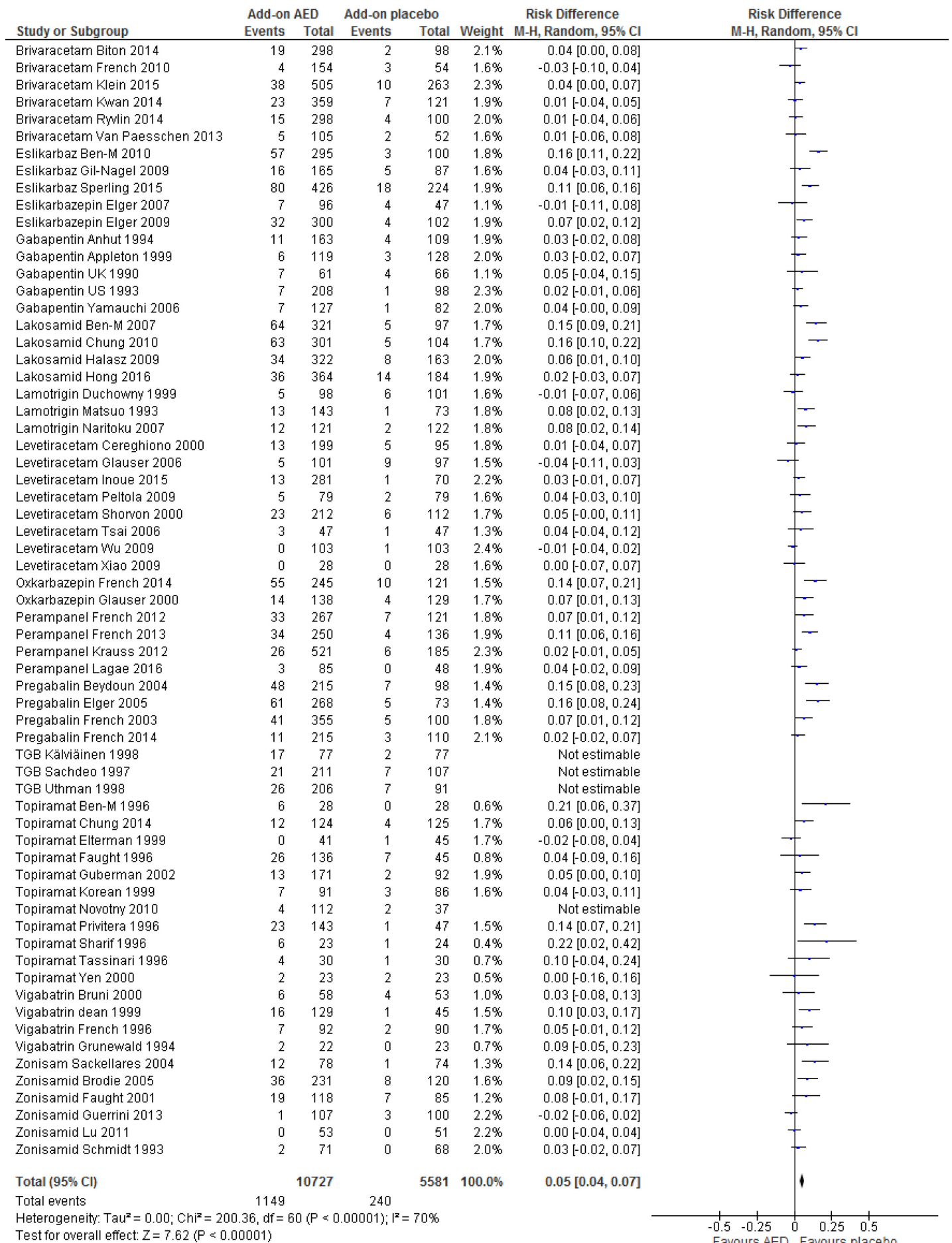


Figure 2.9 Add-on AED compared to add-on placebo for persons with focal epilepsy, ≥ 50 % seizure reduction in focal to bilateral tonic-clonic seizures

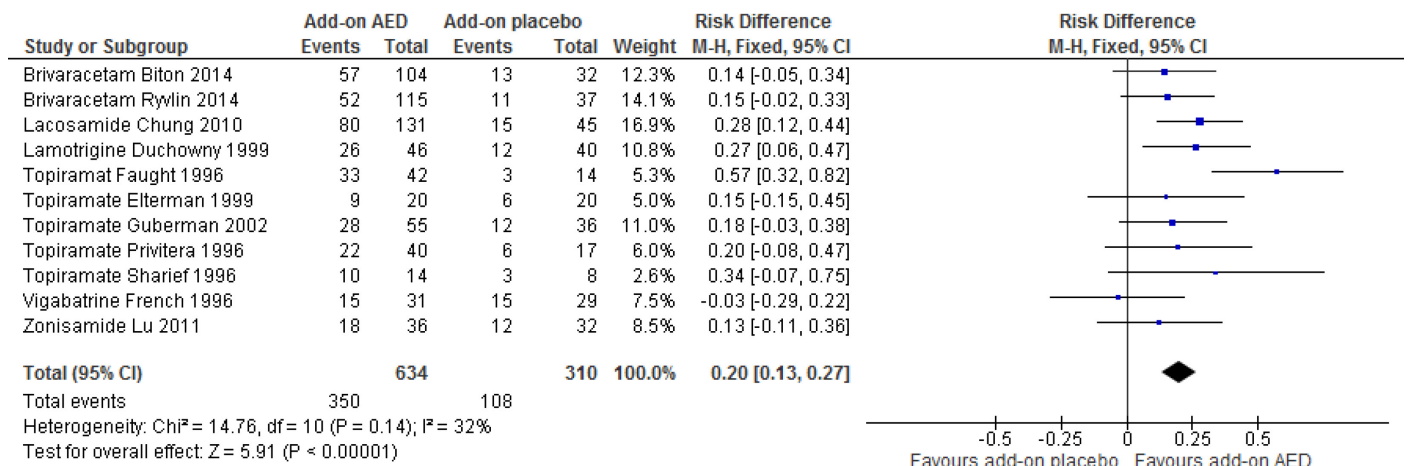


Figure 2.10 Add-on AED compared to add-on placebo for persons with generalized tonic-clonic seizures, ≥ 50 % seizure reduction

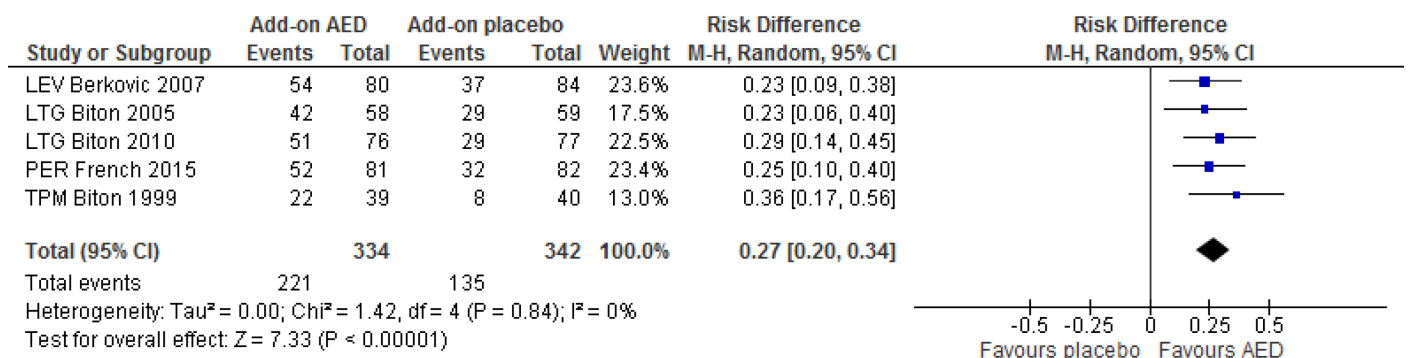
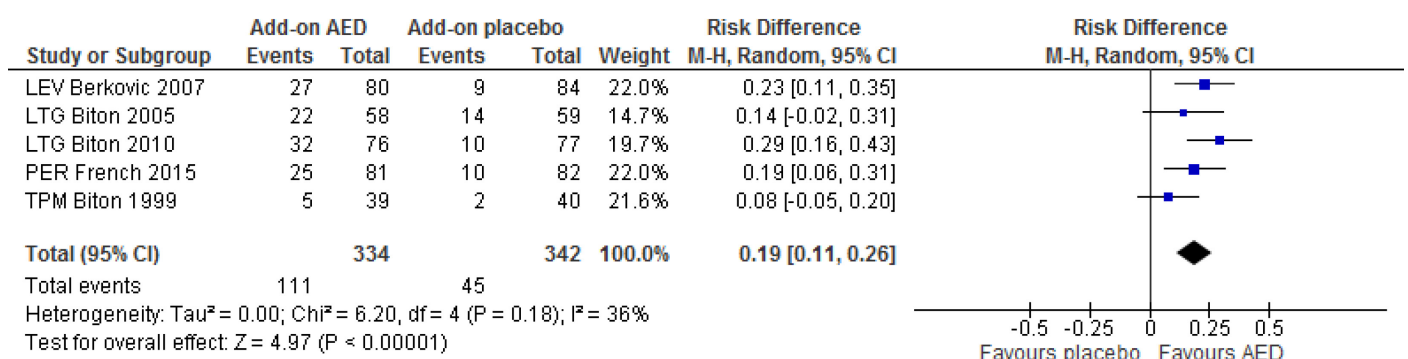
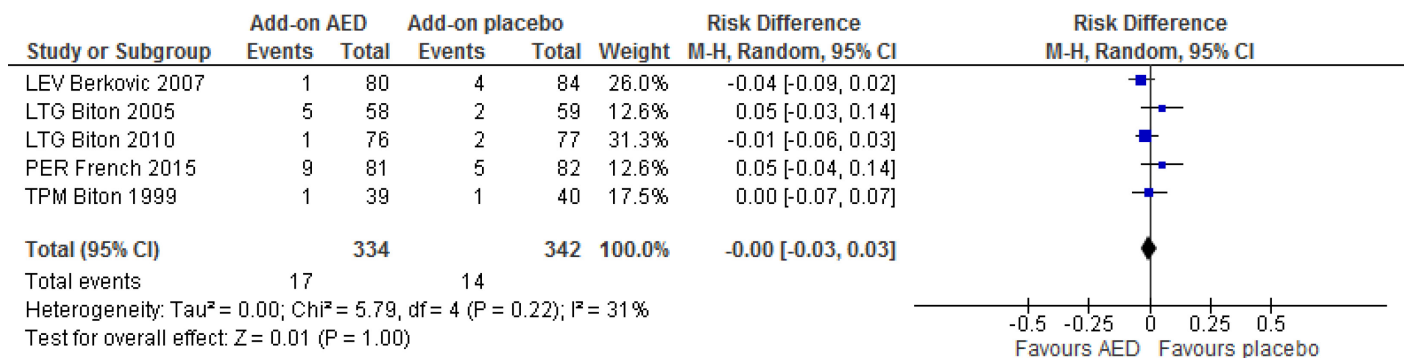


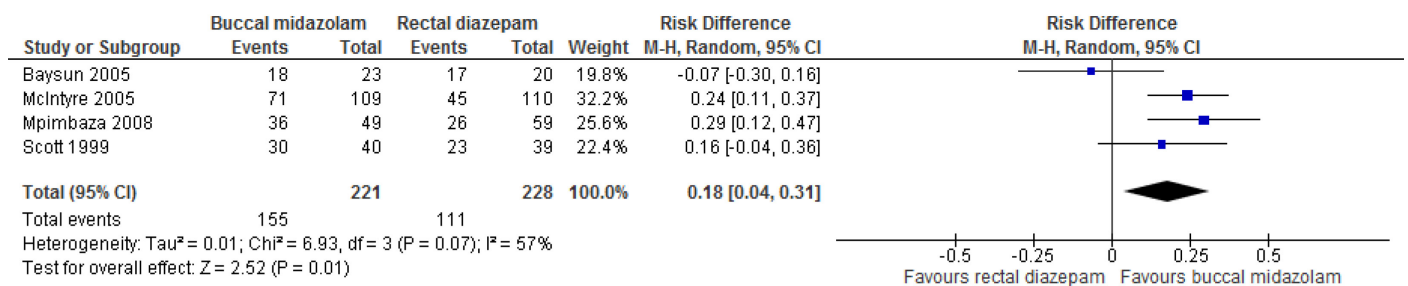
Figure 2.11 Add-on AED compared to add-on placebo for persons with generalized tonic-clonic seizures, seizure freedom



Figur 2.12 Add-on AED compared to add-on placebo for persons with generalized tonic-clonic seizures, discontinuation due to adverse events

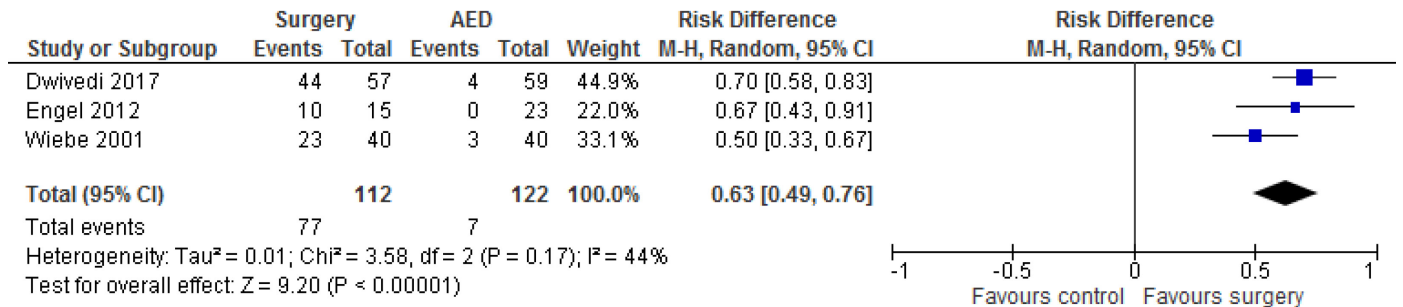


Figur 2.13 Buccal administration of midazolam compared to rectal administration of diazepam, cessation of seizure activity within 10 min

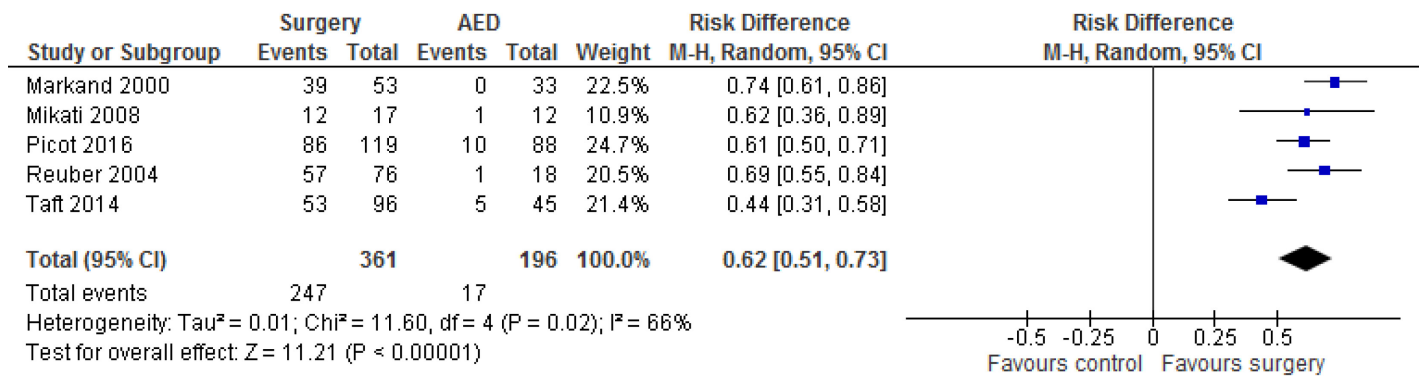


Kirurggi

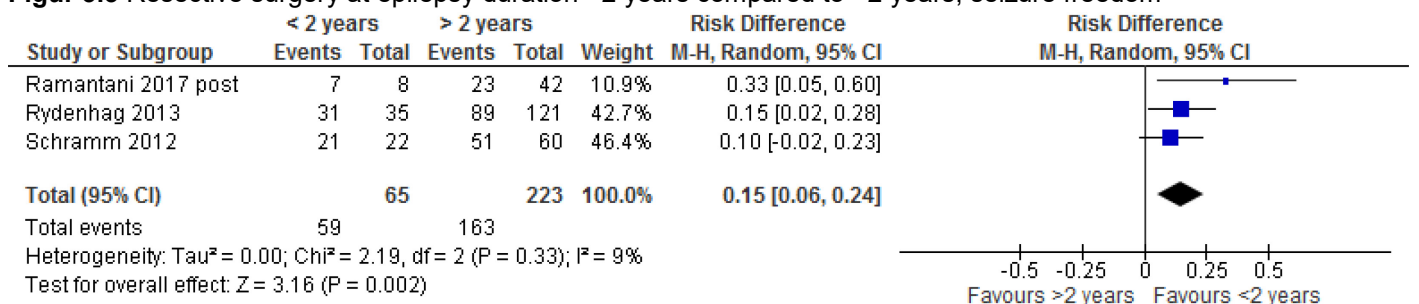
Figur 3.1 Resective surgery compared to AED, seizure freedom, RCT:s



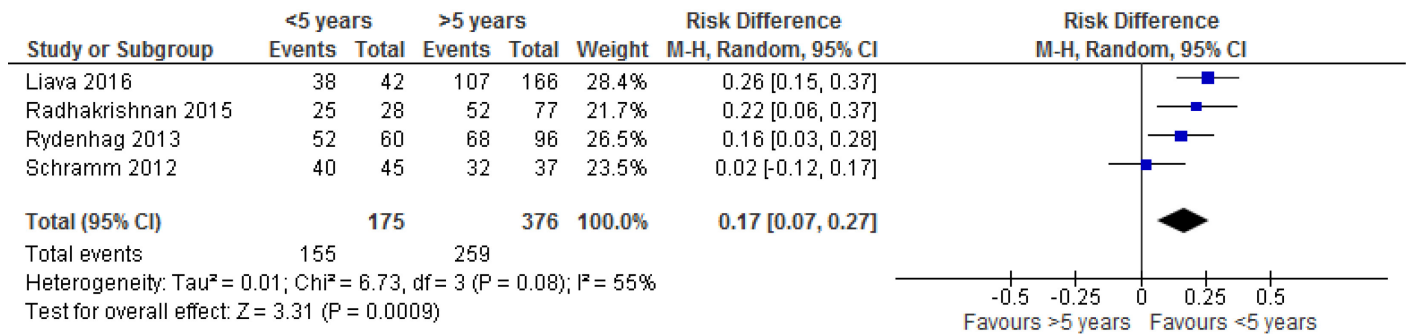
Figur 3.2 Resective surgery compared to AED, seizure freedom, observational studies



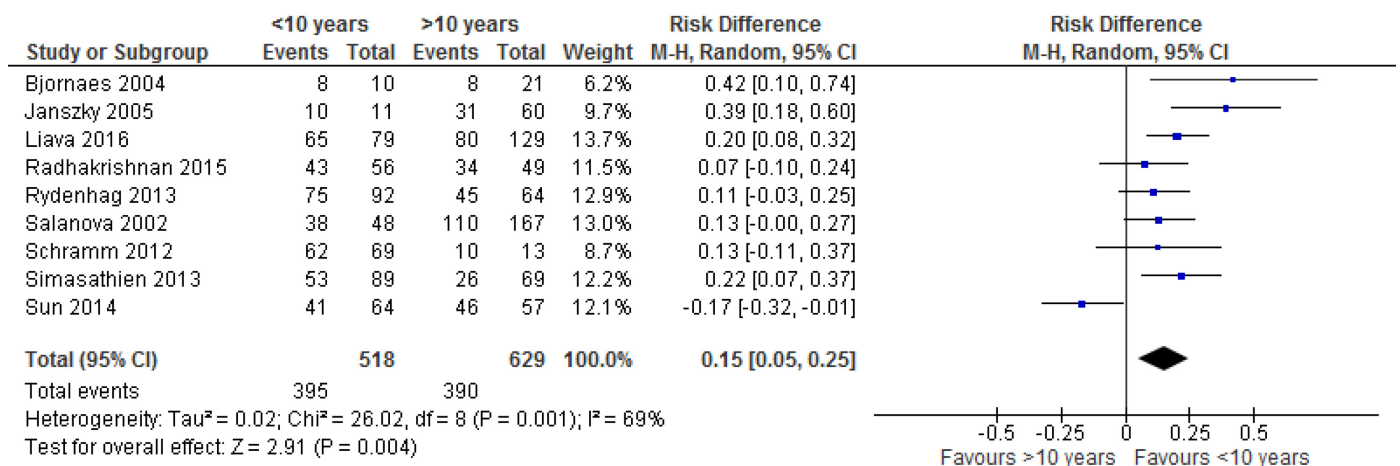
Figur 3.3 Resective surgery at epilepsy duration <2 years compared to >2 years, seizure freedom



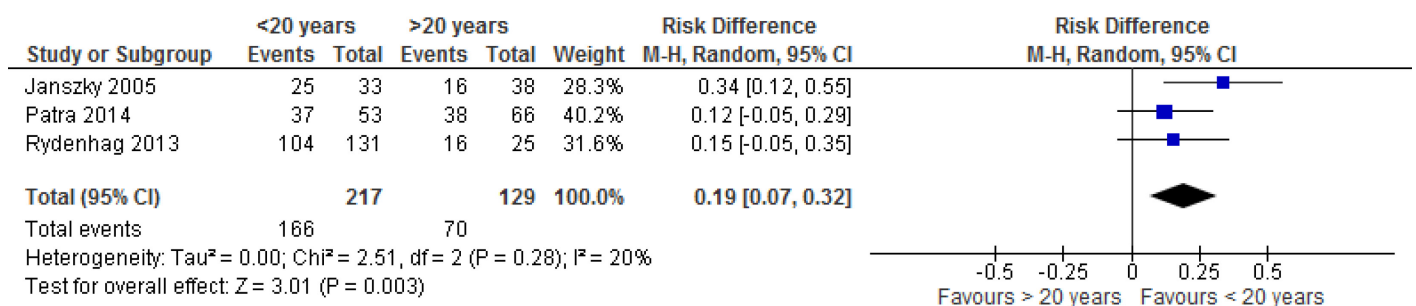
Figur 3.4 Resective surgery at epilepsy duration <5 years compared to >5 years, seizure freedom



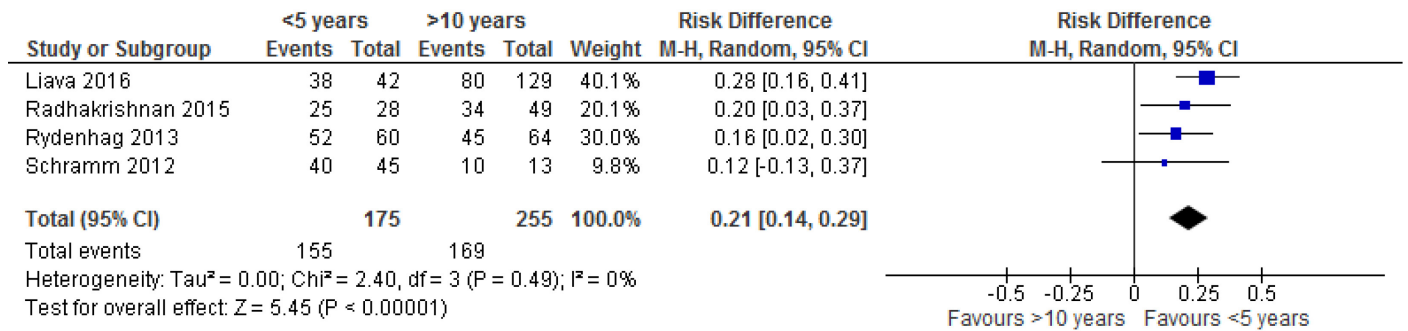
Figur 3.5 Resective surgery at epilepsy duration <10 years compared to >10 years, seizure freedom



Figur 3.6. Resective surgery at epilepsy duration <20 years compared to >20 years, seizure freedom

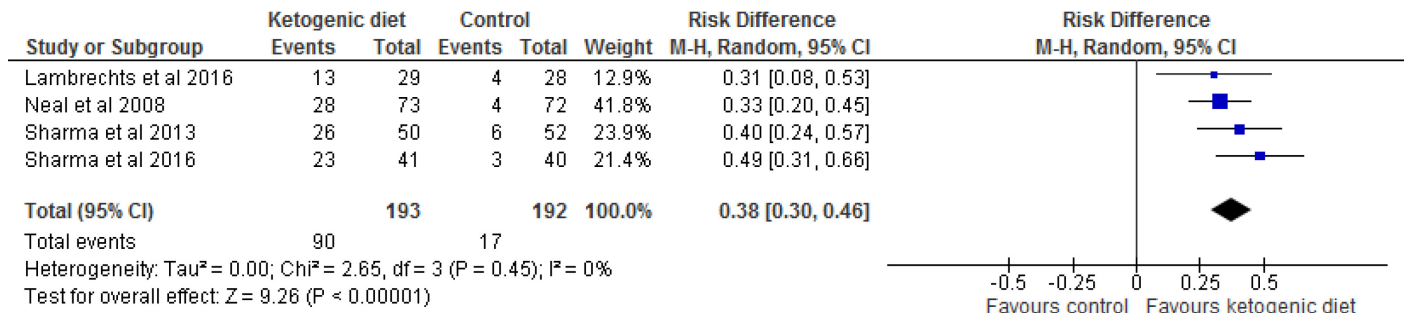


Figur 3.7. Resective surgery at epilepsy duration <5 years compared to >10 years, seizure freedom



Annan behandling/Other treatment

Figur 4.1 Ketogenic diet compared to control, ≥50 % seizure reduction, children and adolescents



Figur 4.2 Ketogenic diet compared to control, ≥50 % seizure reduction, adults

