



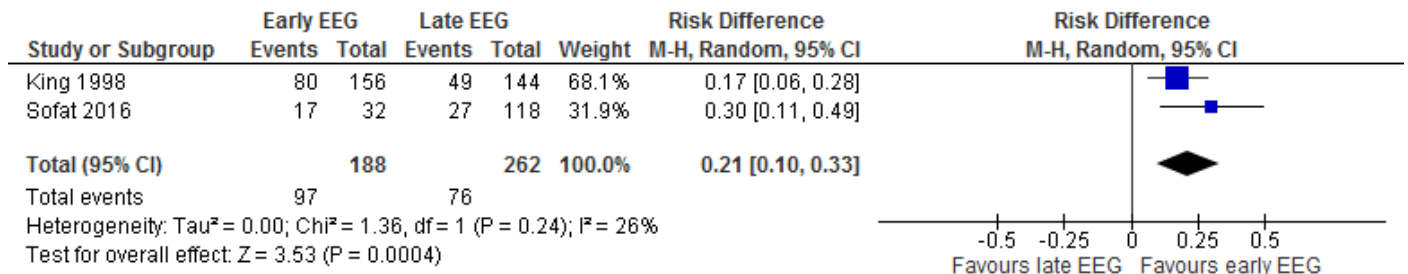
Bilaga 4 - Metaanalyser

Innehåll

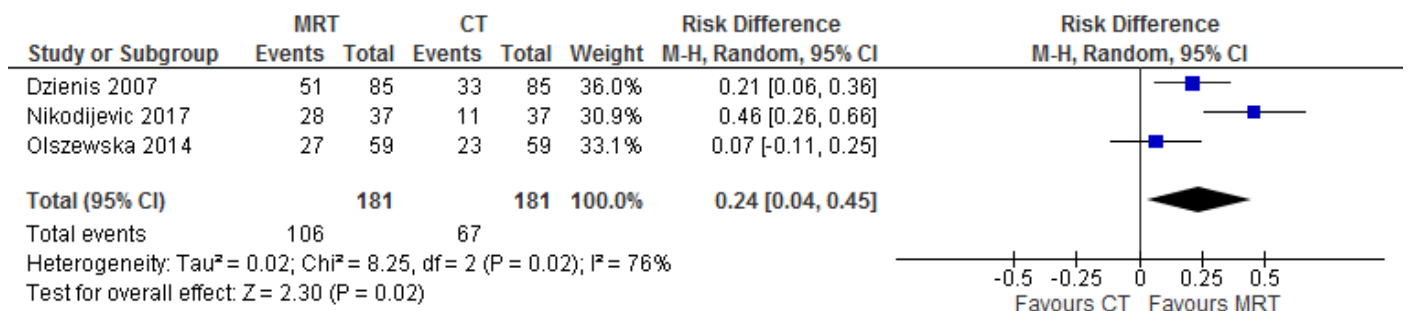
Diagnostik	2
Läkemedel	3
Kirurgi.....	10
Annan behandling.....	13

Diagnostik

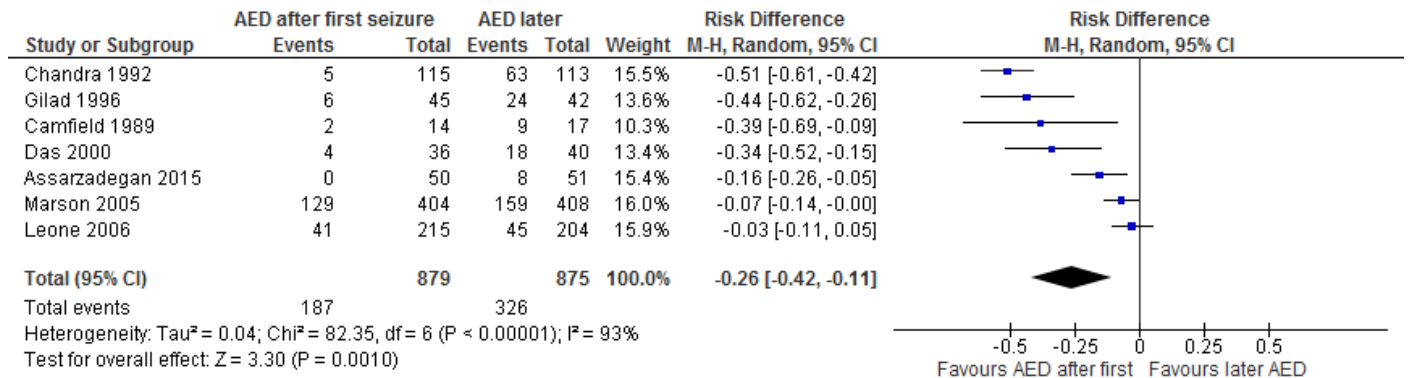
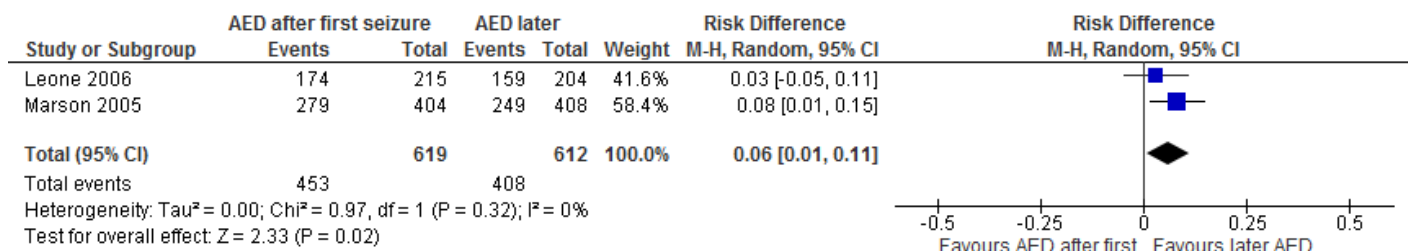
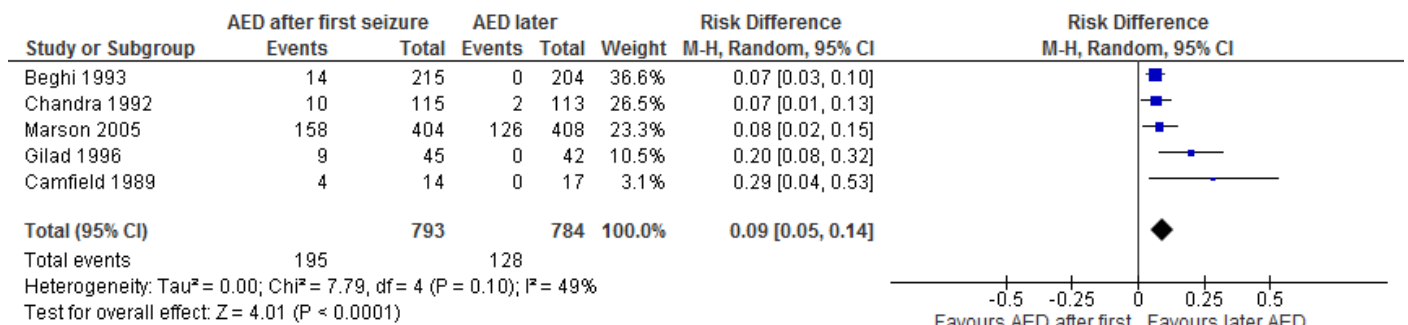
Figur 1.1 Early EEG (within 12 or 24 hours after seizure onset) compared to late EEG (more than 12 or 24 hours after seizure onset), observed epileptiform abnormalities

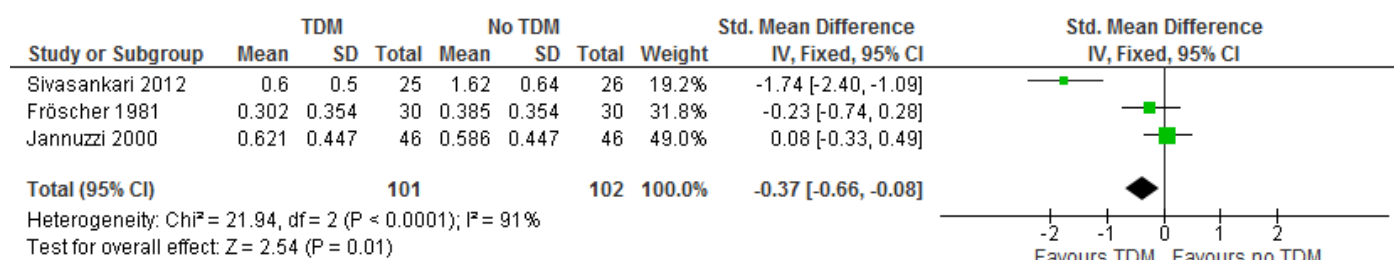
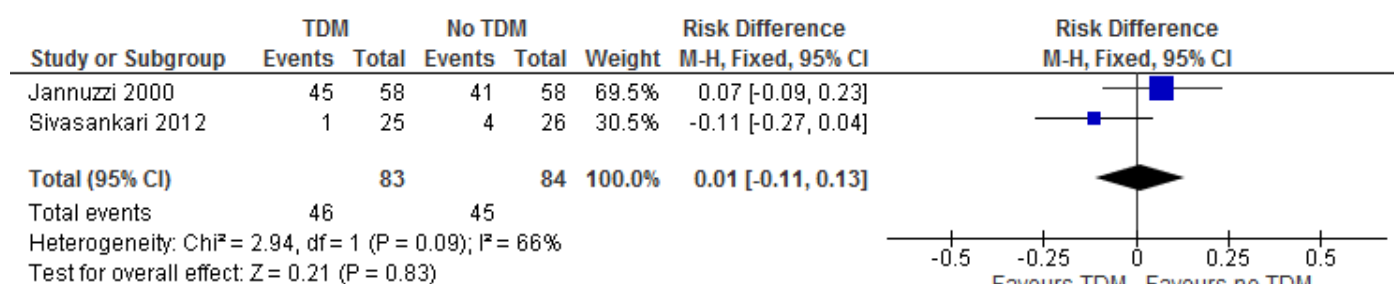


Figur 1.2 MR compared to CT, abnormal findings

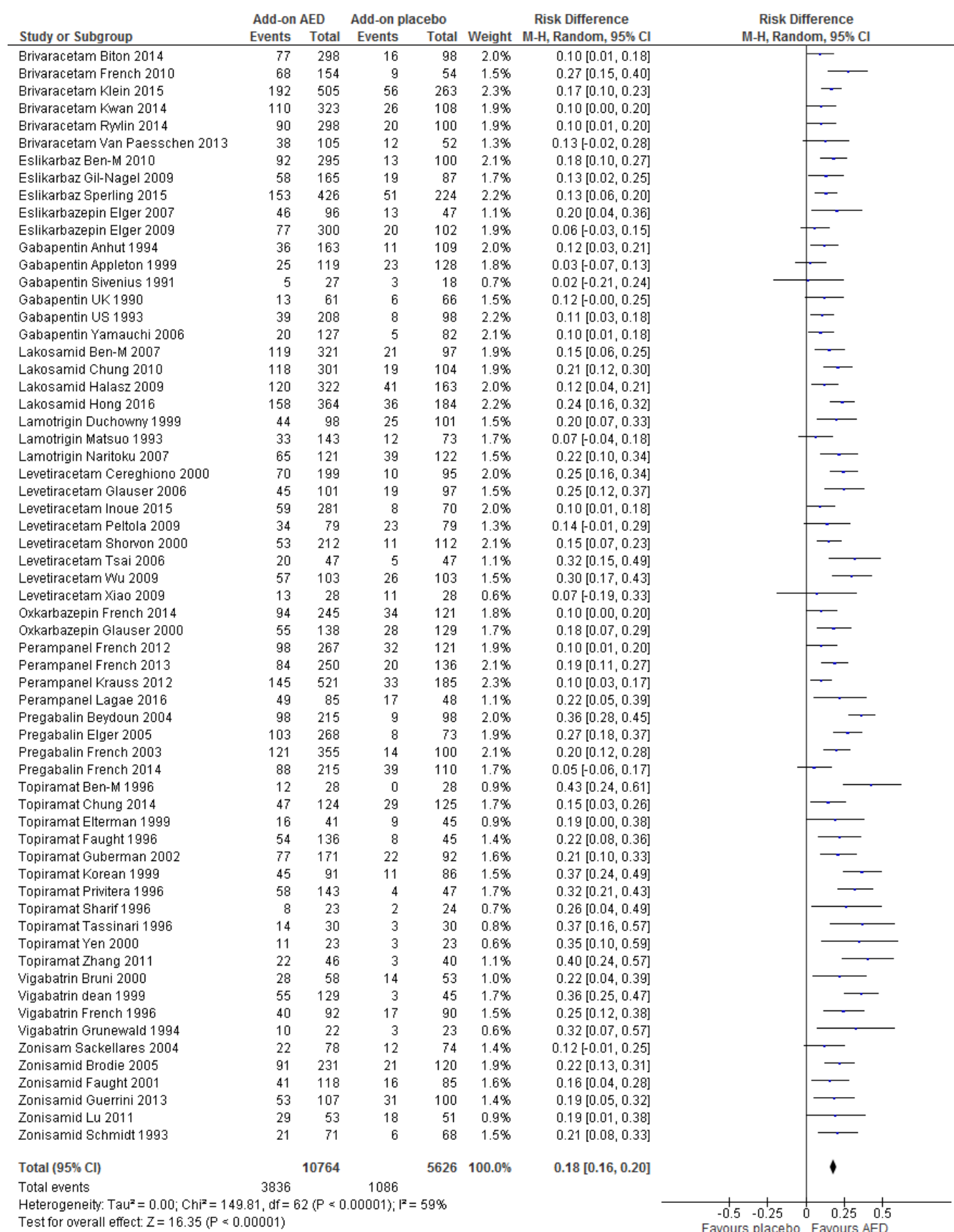


Läkemedel

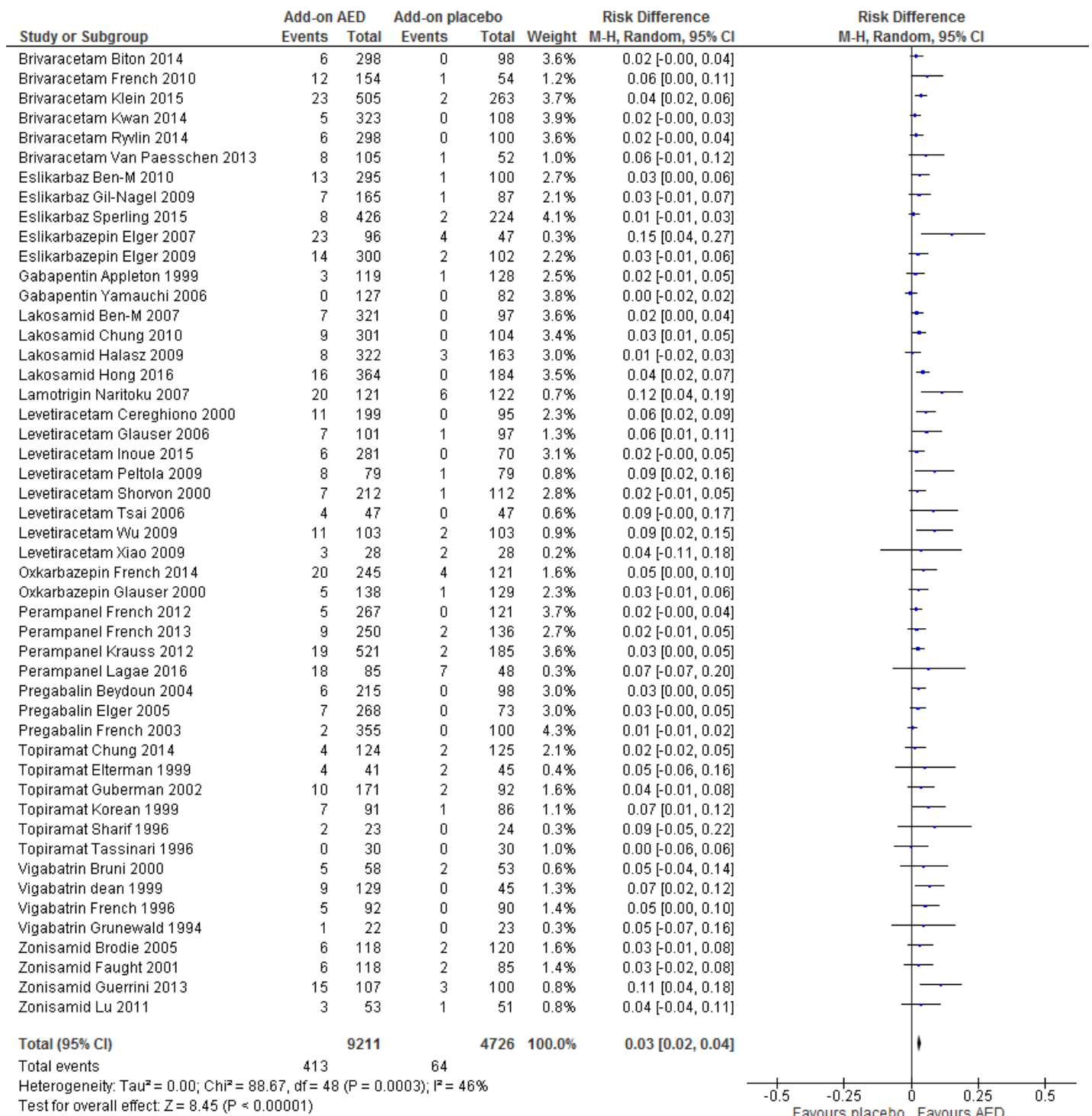
Figur 2.1 AED administered after first seizure compared to later administration of AED, recurrence of seizure at 6-24 months**Figur 2.2** AED administered after first seizure compared to later administration of AED, 2-year remission**Figur 2.3** AED administered after first seizure compared to later administration of AED, adverse events

Figur 2.4 AED with TDM compared to AED without TDM, reduction in seizure frequency**Figur 2.5** AED with TDM compared to AED without TDM, mild adverse events

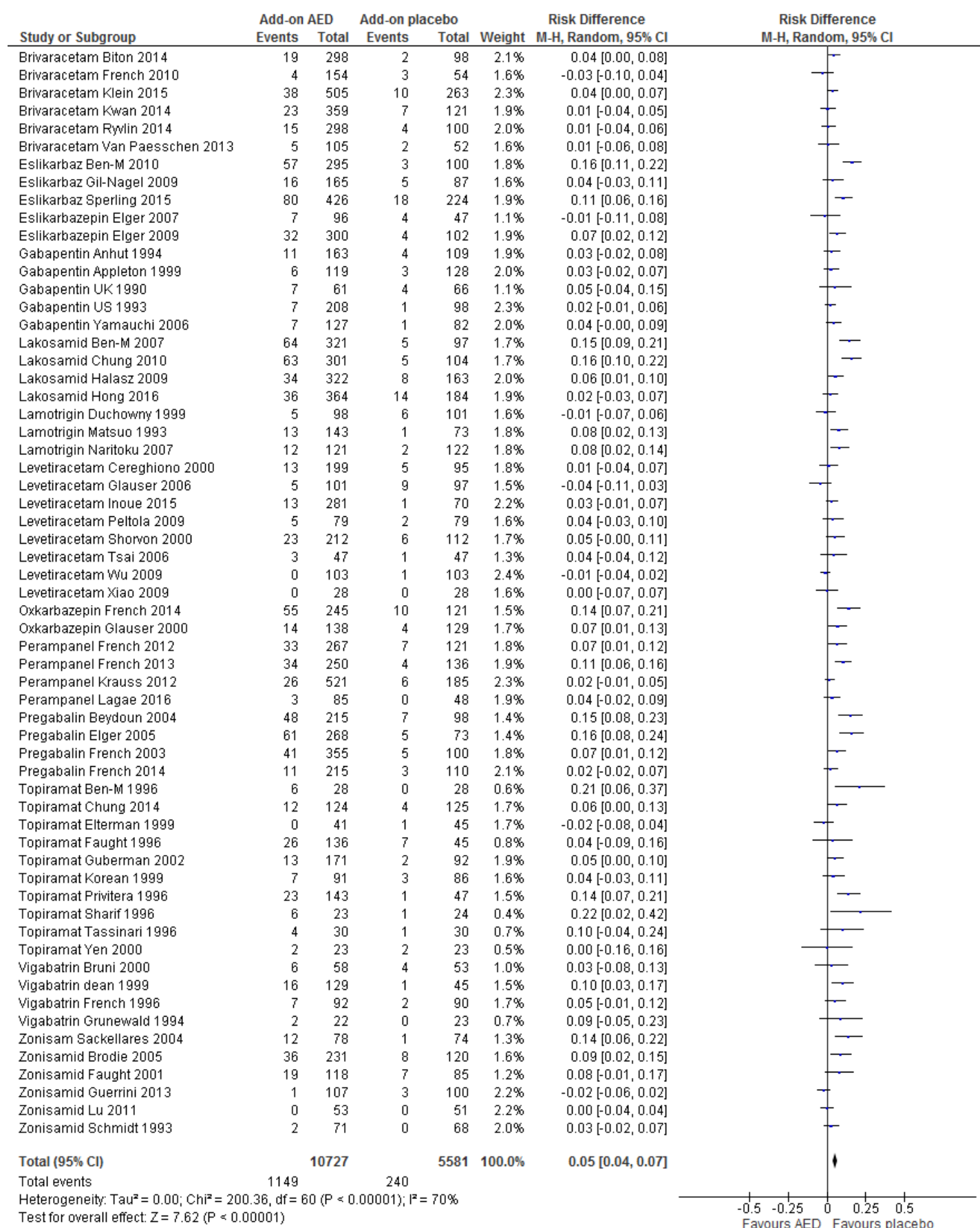
Figur 2.6 Add-on AED compared to add-on placebo for persons with focal epilepsy, $\geq 50\%$ seizure reduction



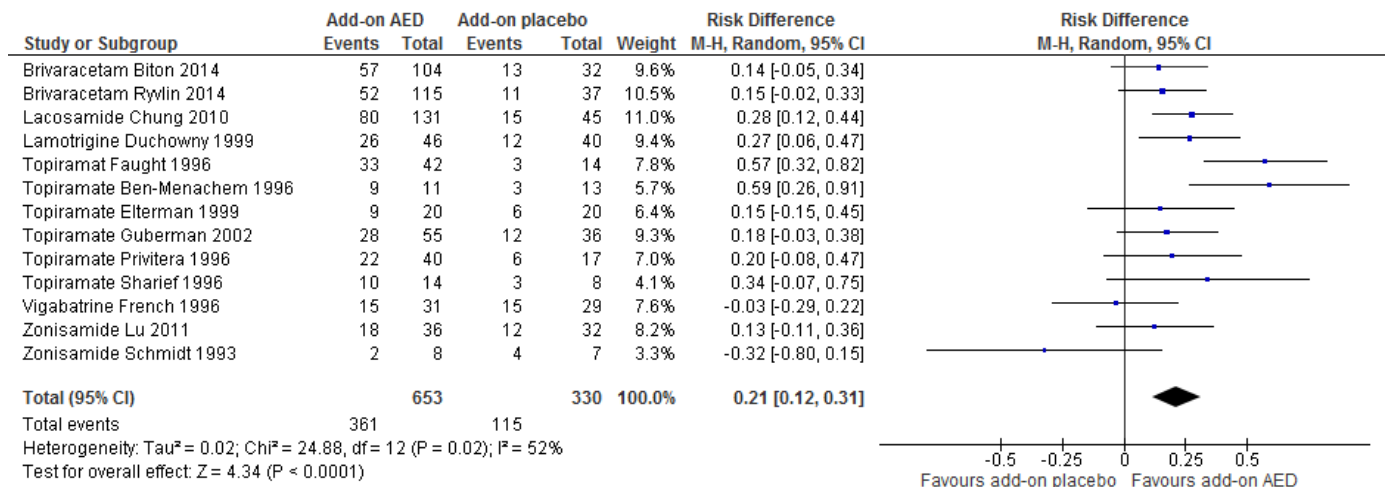
Figur 2.7 Add-on AED compared to add-on placebo for persons with focal epilepsy, seizure freedom



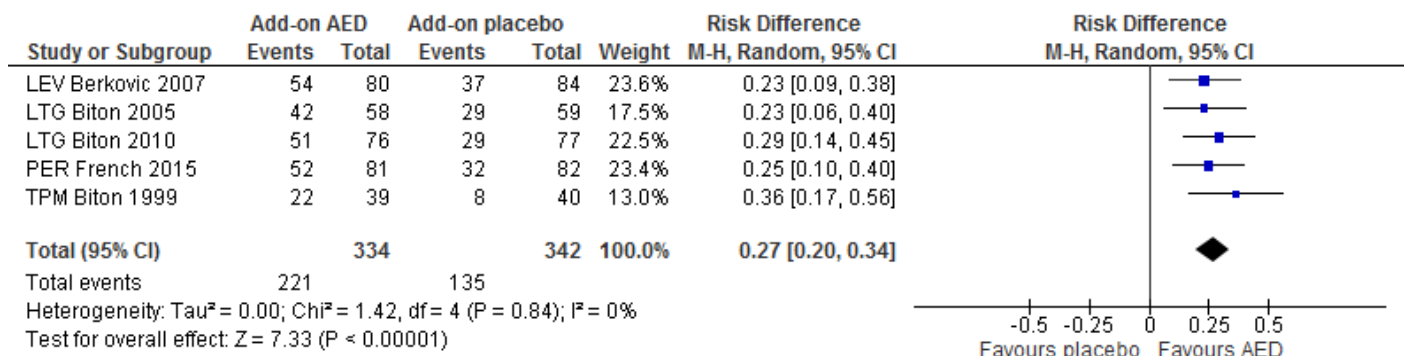
Figur 2.8 Add-on AED compared to add-on placebo, discontinuation due to adverse events



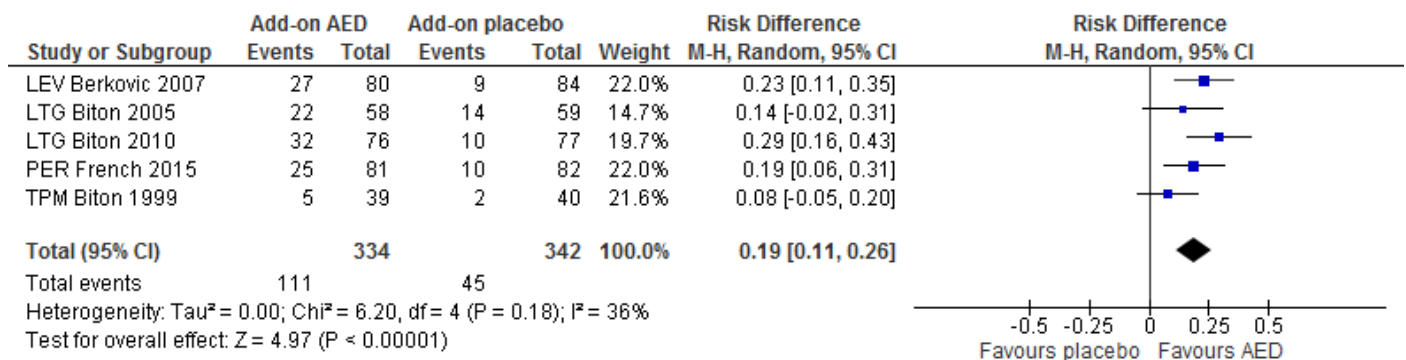
Figur 2.9 Add-on AED compared to add-on placebo for persons with focal epilepsy, $\geq 50\%$ seizure reduction in focal to bilateral tonic-clonic seizures



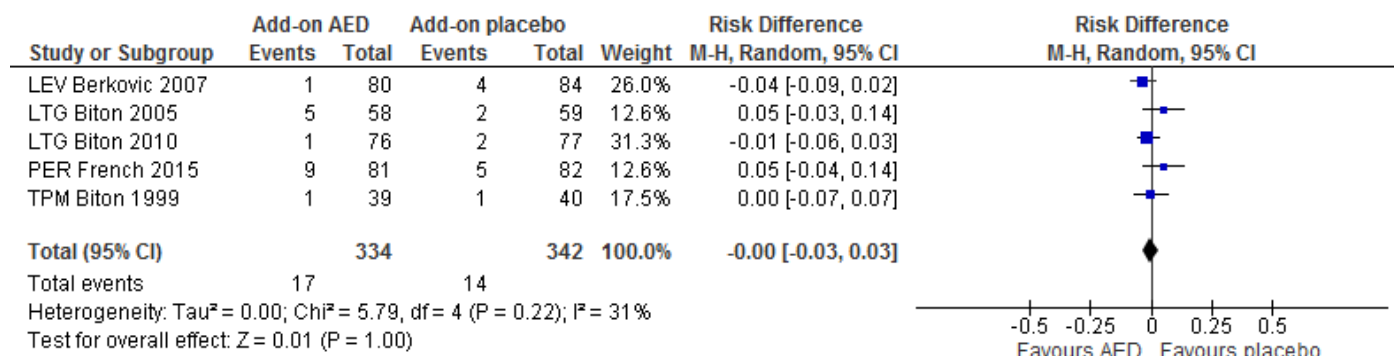
Figur 2.10 Add-on AED compared to add-on placebo for persons with generalized tonic-clonic seizures, $\geq 50\%$ seizure reduction



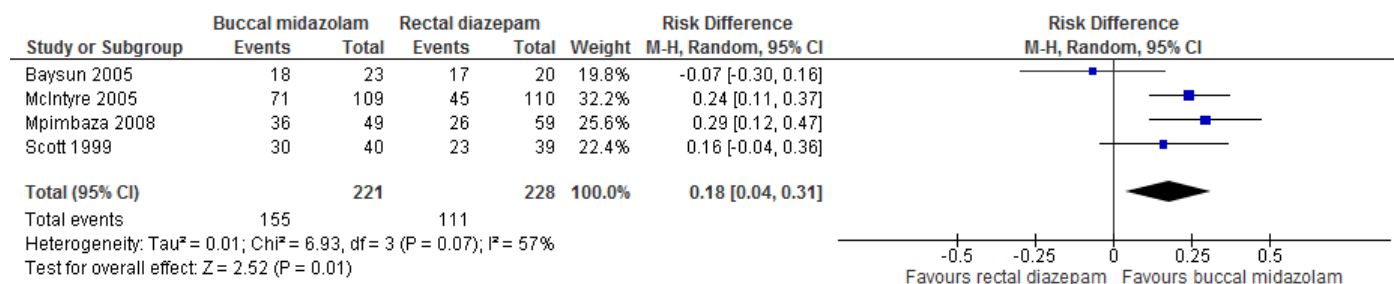
Figur 2.11 Add-on AED compared to add-on placebo for persons with generalized tonic-clonic seizures, seizure freedom



Figur 2.12 Add-on AED compared to add-on placebo for persons with generalized tonic-clonic seizures, discontinuation due to adverse events

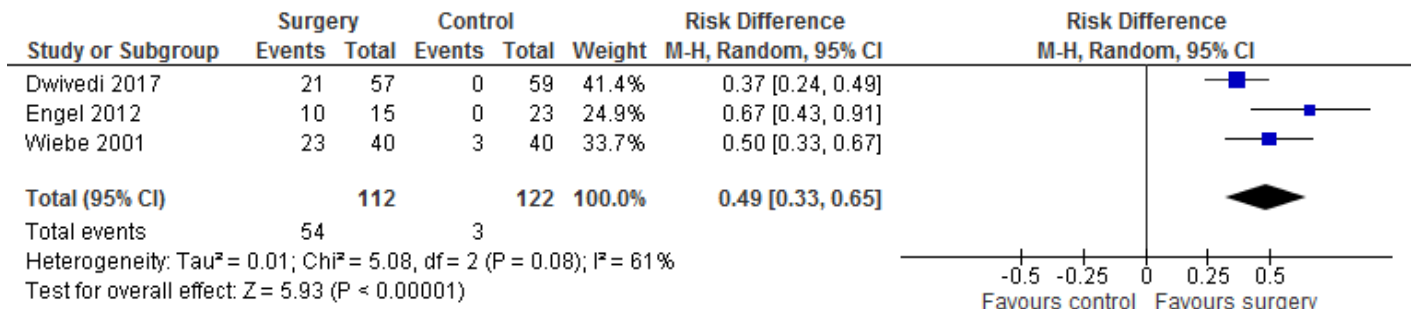


Figur 2.13 Buccal administration of midazolam compared to rectal administration of diazepam, cessation of seizure activity within 10 min

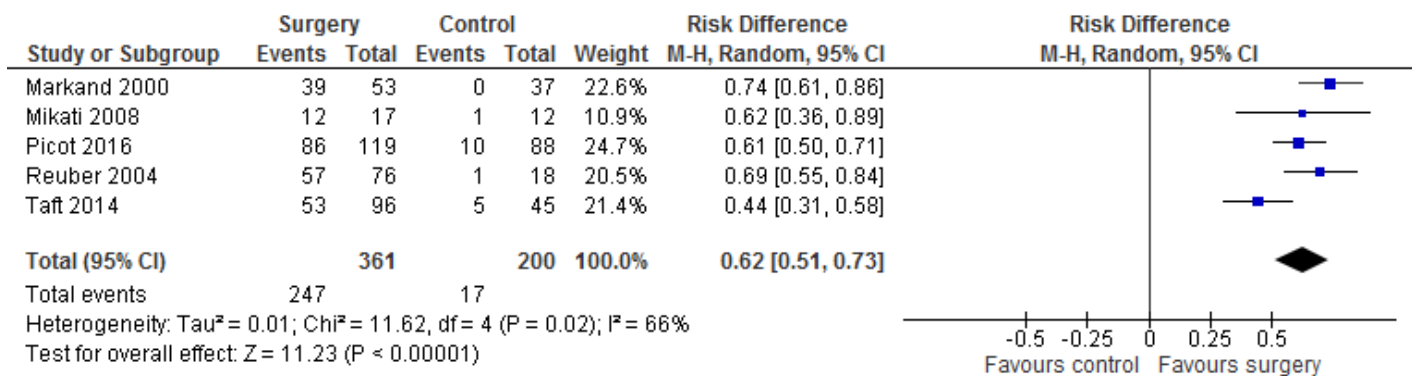


Kirurgi

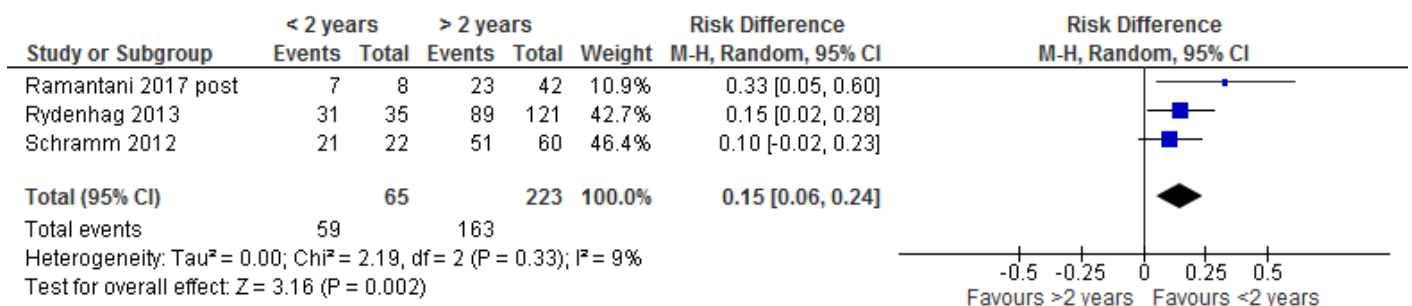
Figur 3.1 Resective surgery compared to control, seizure freedom, RCT:s

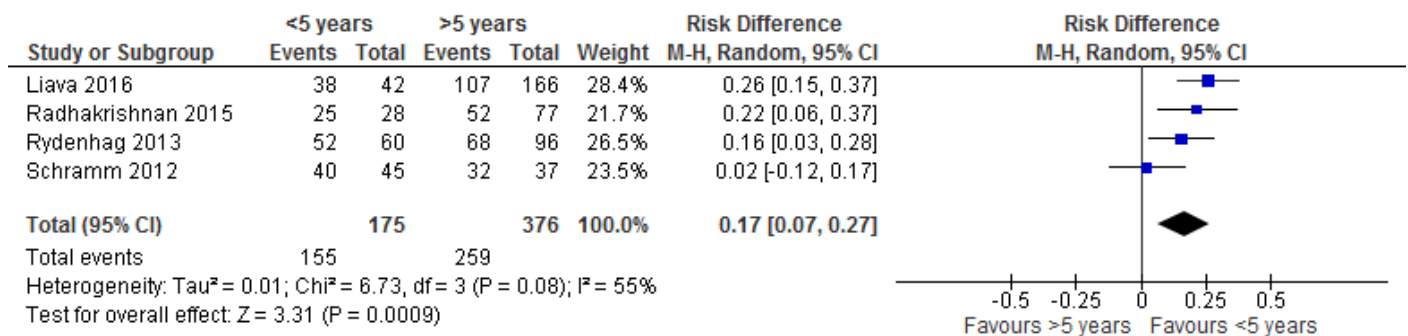
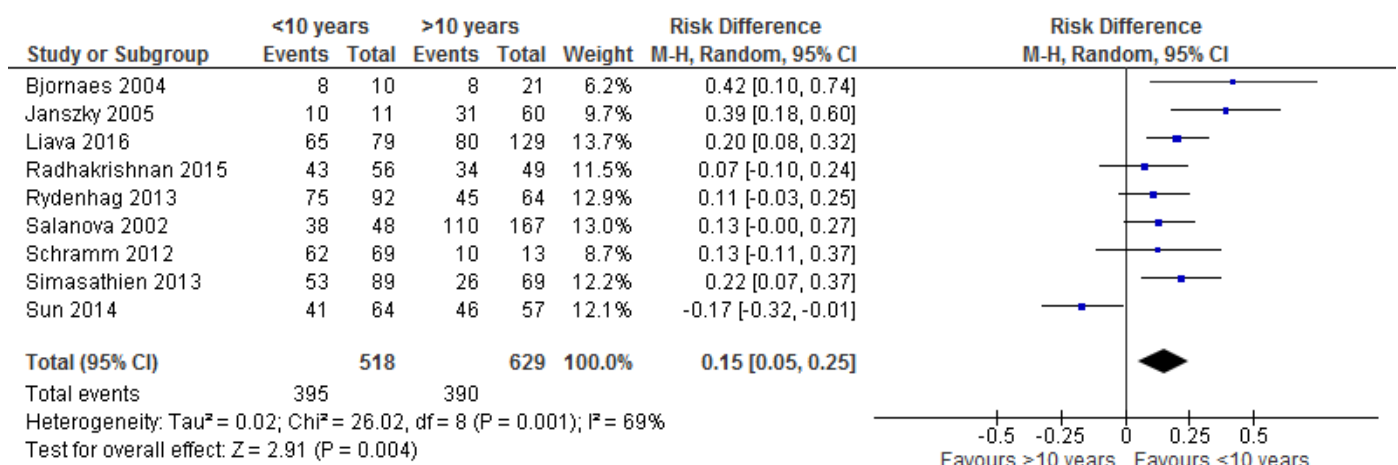
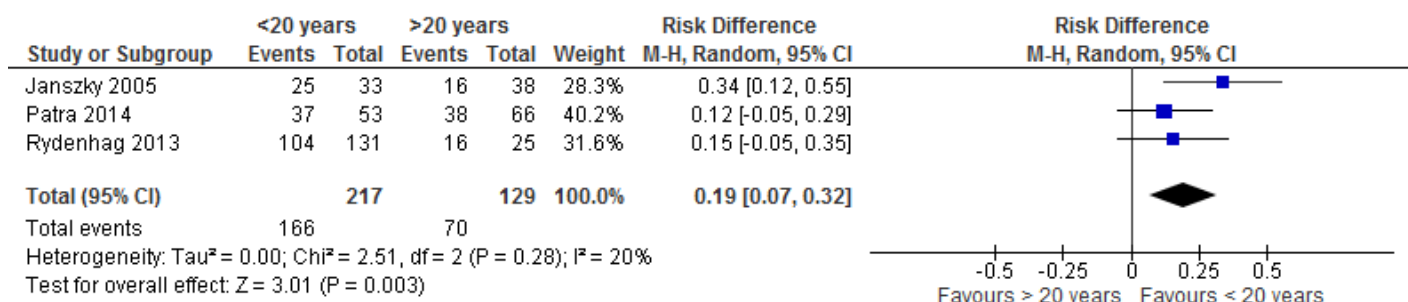


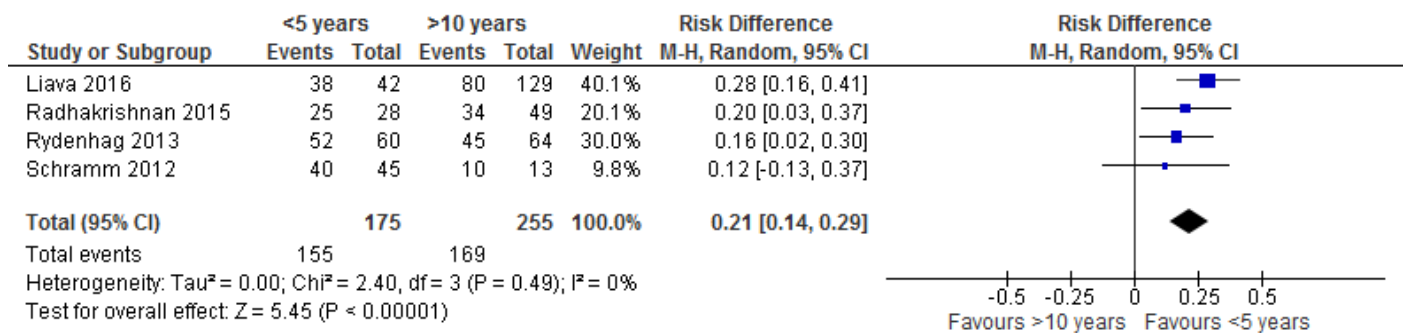
Figur 3.2 Resective surgery compared to control, seizure freedom, observational studies



Figur 3.3 Resective surgery at epilepsy duration <2 years compared to >2 years, seizure freedom

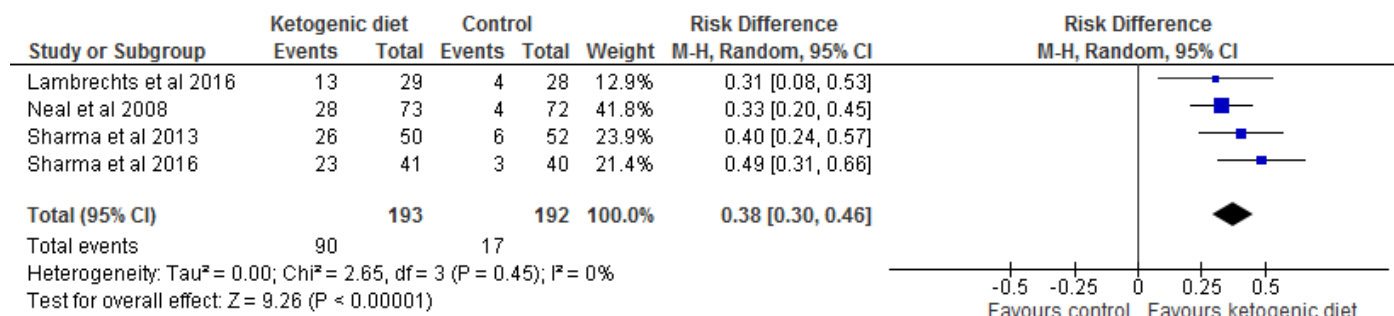


Figur 3.4 Resective surgery at epilepsy duration <5 years compared to >5 years, seizure freedom**Figur 3.5** Resective surgery at epilepsy duration <10 years compared to >10 years, seizure freedom**Figur 3.6.** Resective surgery at epilepsy duration <20 years compared to >20 years, seizure freedom

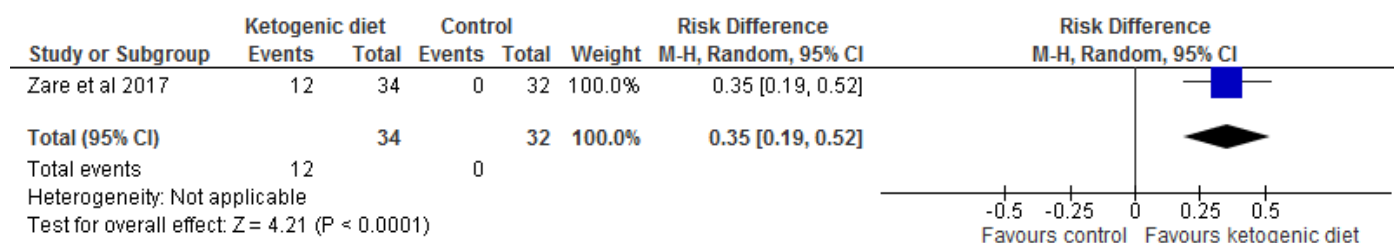
Figur 3.7. Resective surgery at epilepsy duration <5 years compared to >10 years, seizure freedom

Annan behandling

Figur 4.1 Ketogenic diet compared to control, ≥ 50 % seizure reduction, children and adolescents



Figur 4.2 Ketogenic diet compared to control, ≥ 50 % seizure reduction, adults



Figur 4.3 VNS compared to control, ≥ 50 % seizure reduction

